



Ted Alexander
Sun City, Kansas

From Cedar Forest to Regenerated Rangeland

Alexander Ranch Part Two
Ted Alexander

Alexander Ranch

“Ancora Imparo”

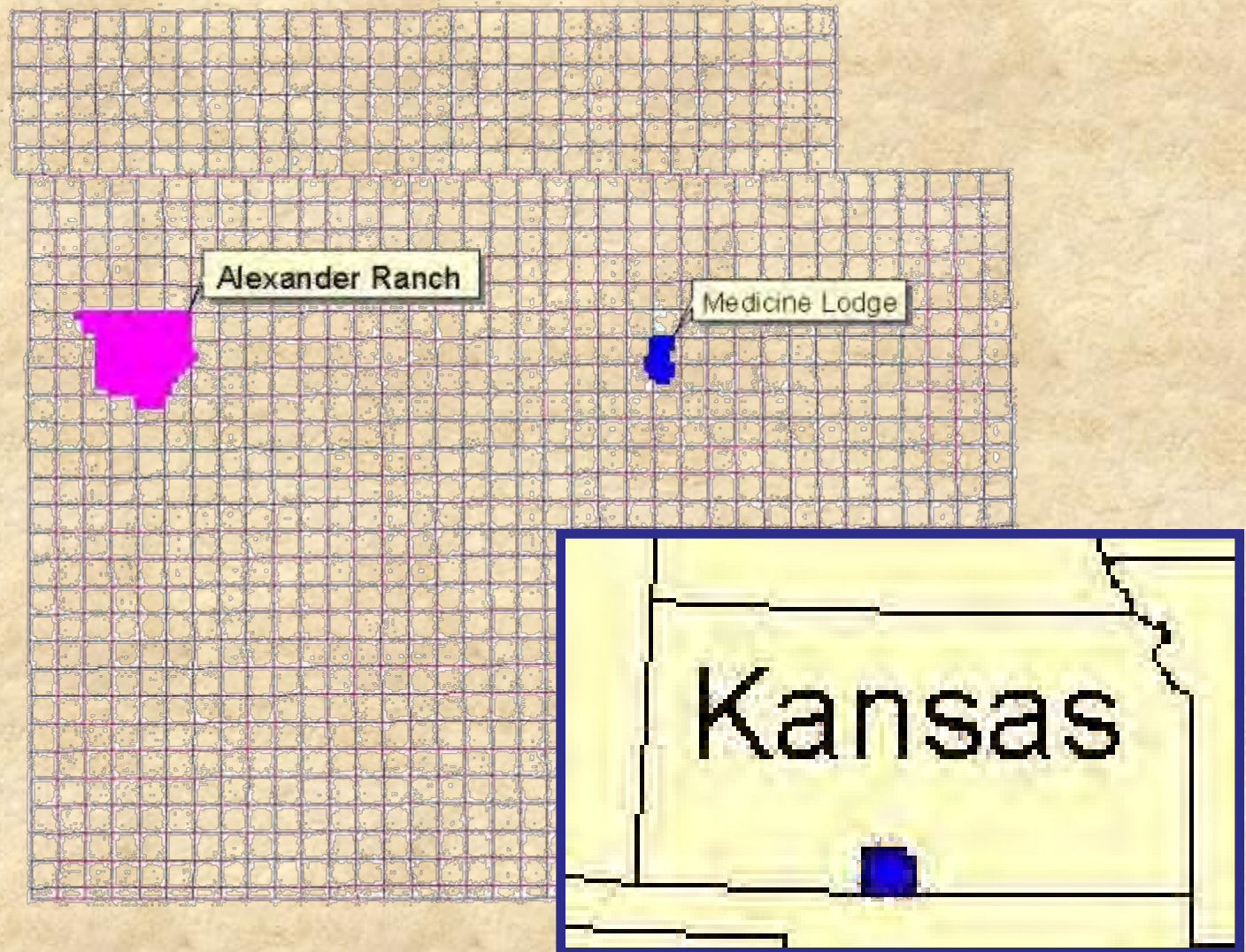
“I am still learning”

Michelangelo

(quoted on his 84th birthday)

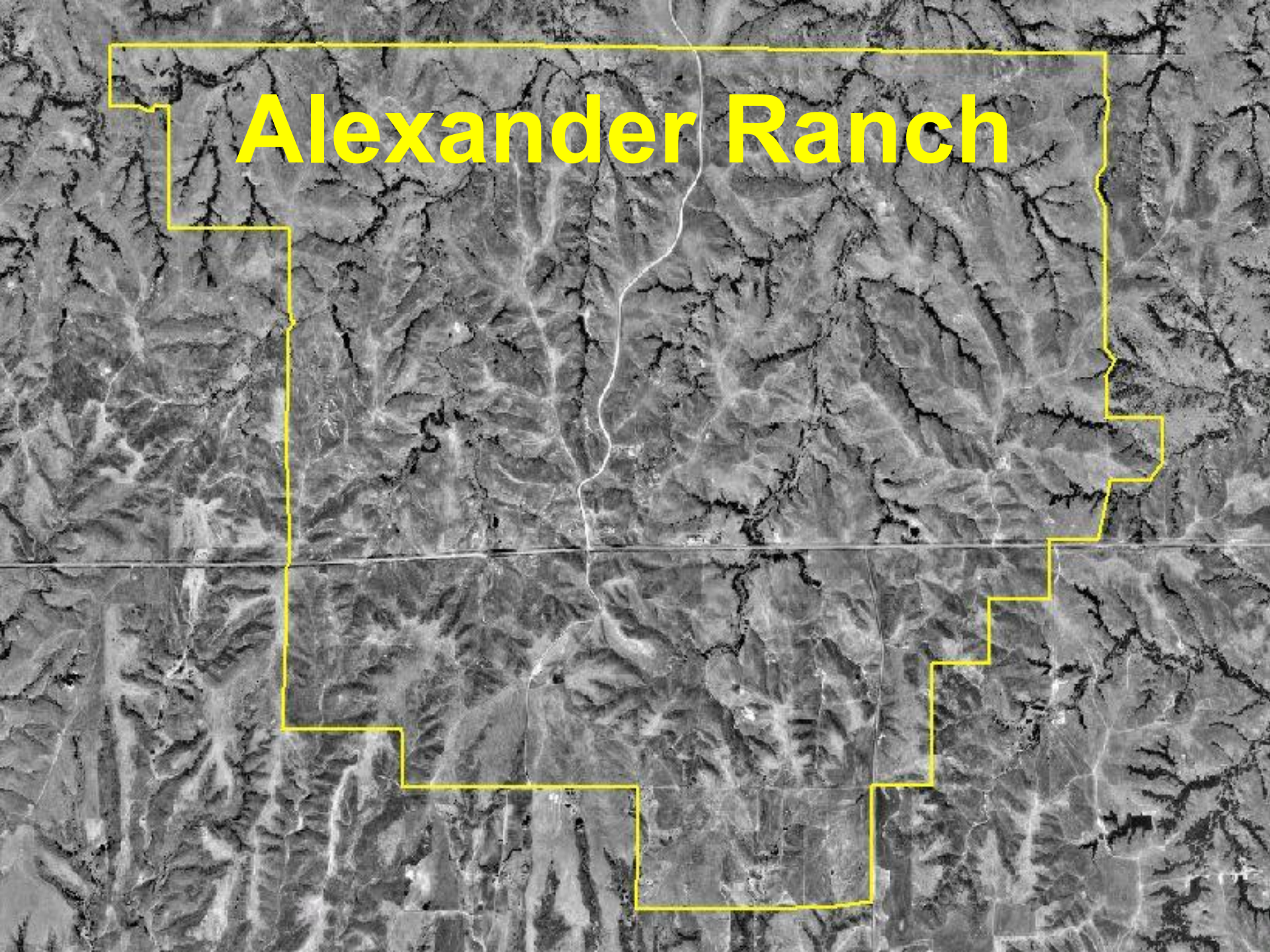
**The declaration of purpose for the Alexander Ranch
is to manage all integrated resources
in order to maximize the production of protein,
shape a harmonious existence with nature
and maintain economic viability.**

Barber County, Kansas



Alexander Ranch

Alexander Ranch



Philosophy of Ranching

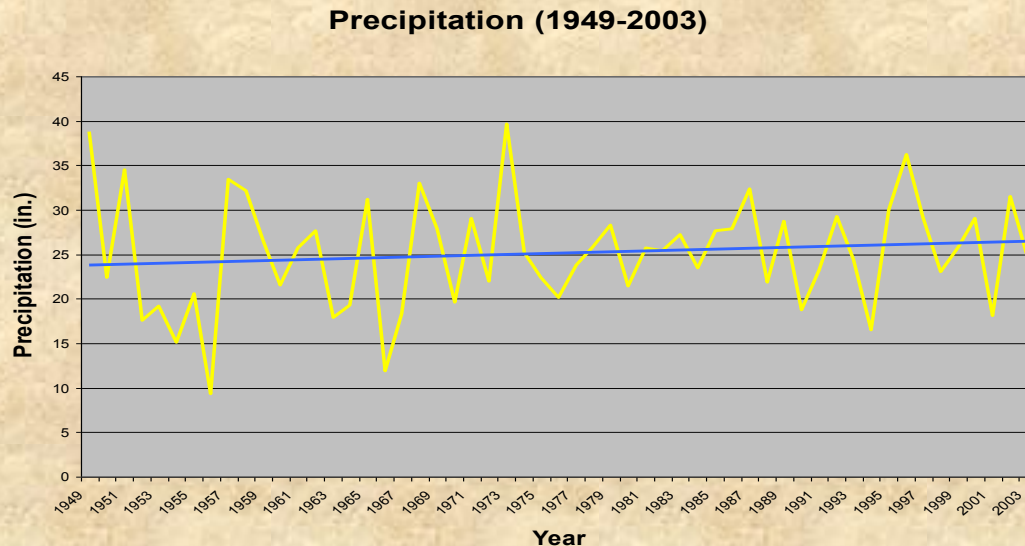
**From Columbus Grazing to
Managed-Intensive Grazing**

Alexander Ranch

Five Grazing Principles

- Graze for the animal!
- Rest for the grass!
- Proper stocking rate!
- High stock density!
- Herd impact!

Drought is a recurring characteristic of our business which should become an integral part of a continuous, coordinated management planning and application process



..... Whether currently in the middle of a drought, going into or coming out of one, or waiting for the next one, the time to prepare for the next drought is NOW.

John Merrill



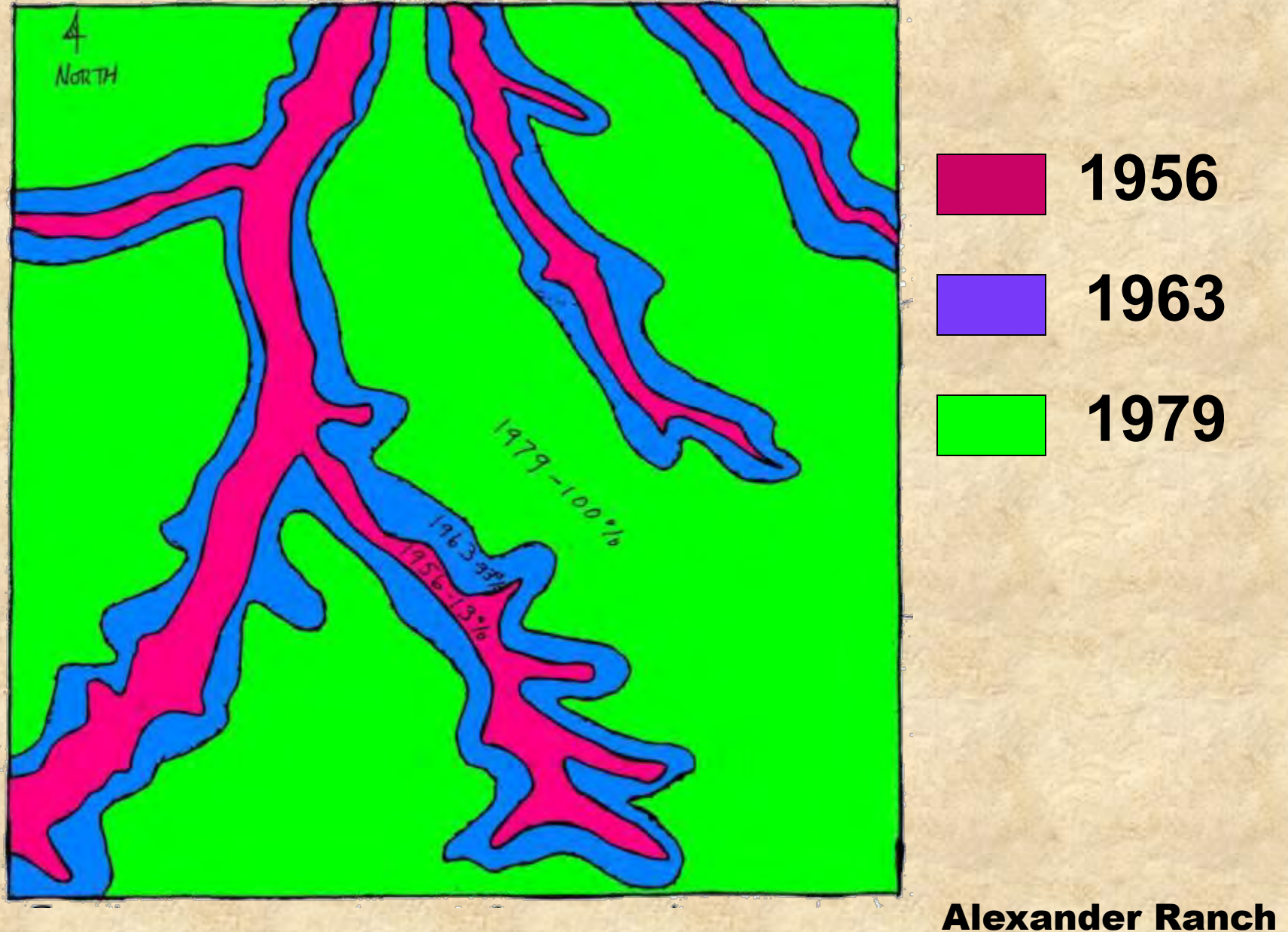
**Alexander
Ranch**

Flash Grazer!!



Alexander Ranch

Historic Cedar Tree Encroachment





Alexander Ranch

Prescribed Burn

**Good
Neighbors
And
Teamwork!**

Alexander Ranch





Alexander Ranch

A photograph of a large, intense fire burning in a field. The fire is bright orange and yellow, with thick smoke rising from it. In the foreground, there is a bare, dark tree with many thin branches. A fence line with several horizontal wires is visible across the middle of the image. The background is filled with the fire and smoke.

50-60% cedar tree control with first burn!

Alexander Ranch

A green tractor with a large, treaded tire and a trailer is positioned in a grassy field. A large evergreen tree is to the left of the tractor. The tractor has a yellow light on its side and a small trailer attached to the back. The background shows a flat, grassy landscape under a clear sky.

Chop!

Chop!

Chop!

Alexander Ranch





Alexander Ranch

A large, intense fire with thick orange and yellow flames rising into a dark, smoky sky. The fire is the central focus, with its bright colors contrasting sharply with the dark, greyish-blue smoke that fills the upper portion of the frame. The flames appear to be consuming a large area, with some darker, charred structures visible at the base of the fire. The overall scene is dramatic and powerful, capturing a moment of intense combustion.

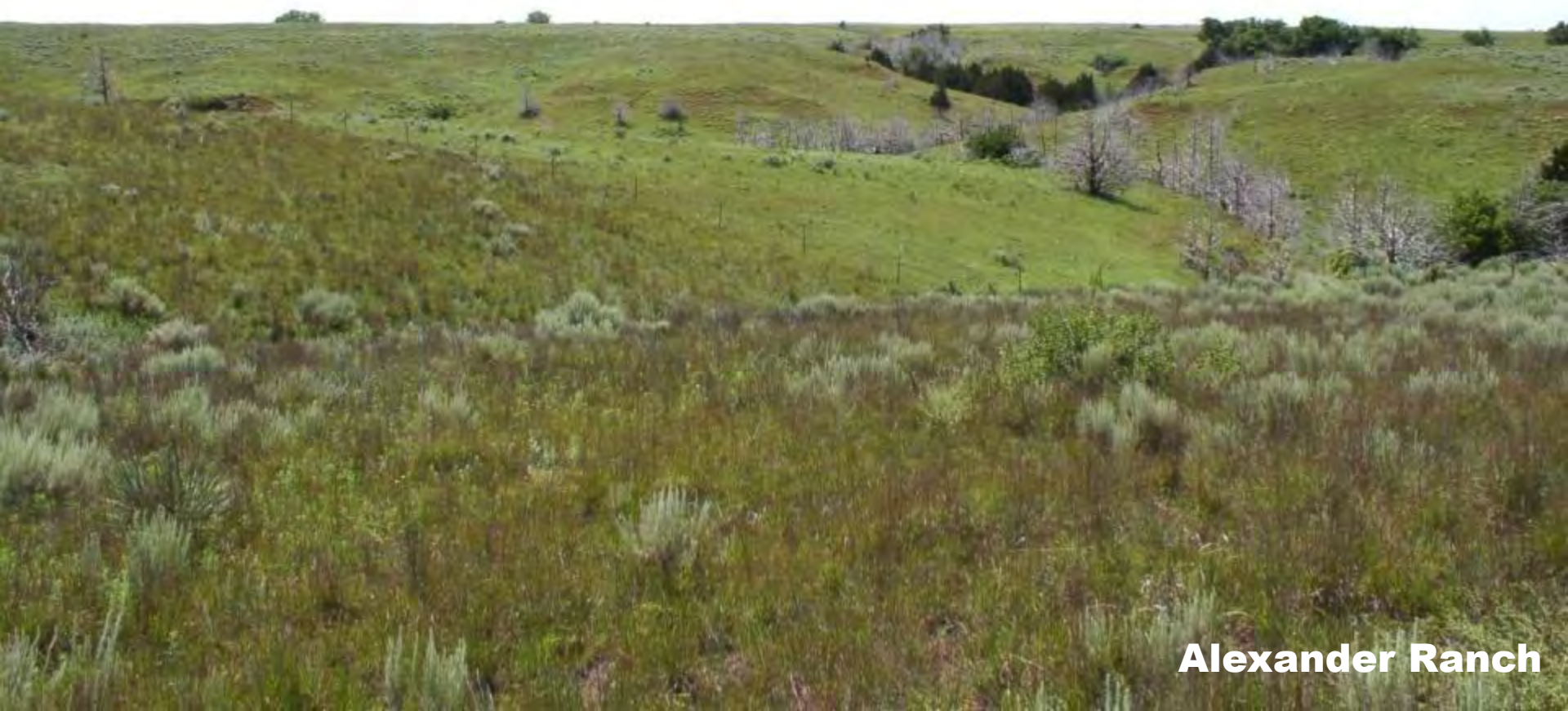
Prescribed Fire?

Alexander Ranch

Fire Making a Difference

Species Composition Change

Improved Hydrology



Alexander Ranch

Fence Line Contrast



Alexander Ranch

Solar-Powered Water System



Alexander Ranch

Riparian Area

Arkansas Darter
Habitat Improved through
Grazing System Approach



Alexander Ranch

Biodiversity

46% of Kansas's known amphibians and reptiles

155 Plant Species

Two Federal Candidate Species



Alexander Ranch

Monitoring



**Photo
Points**



Grazing Stick

- Land EKG
- Mineral Cycle
- Water Cycle
- Plant Community
- Energy Flow



Steward Creek Survey





WOTB
Working On The Business

“Ancora Imparo”

Michelangelo

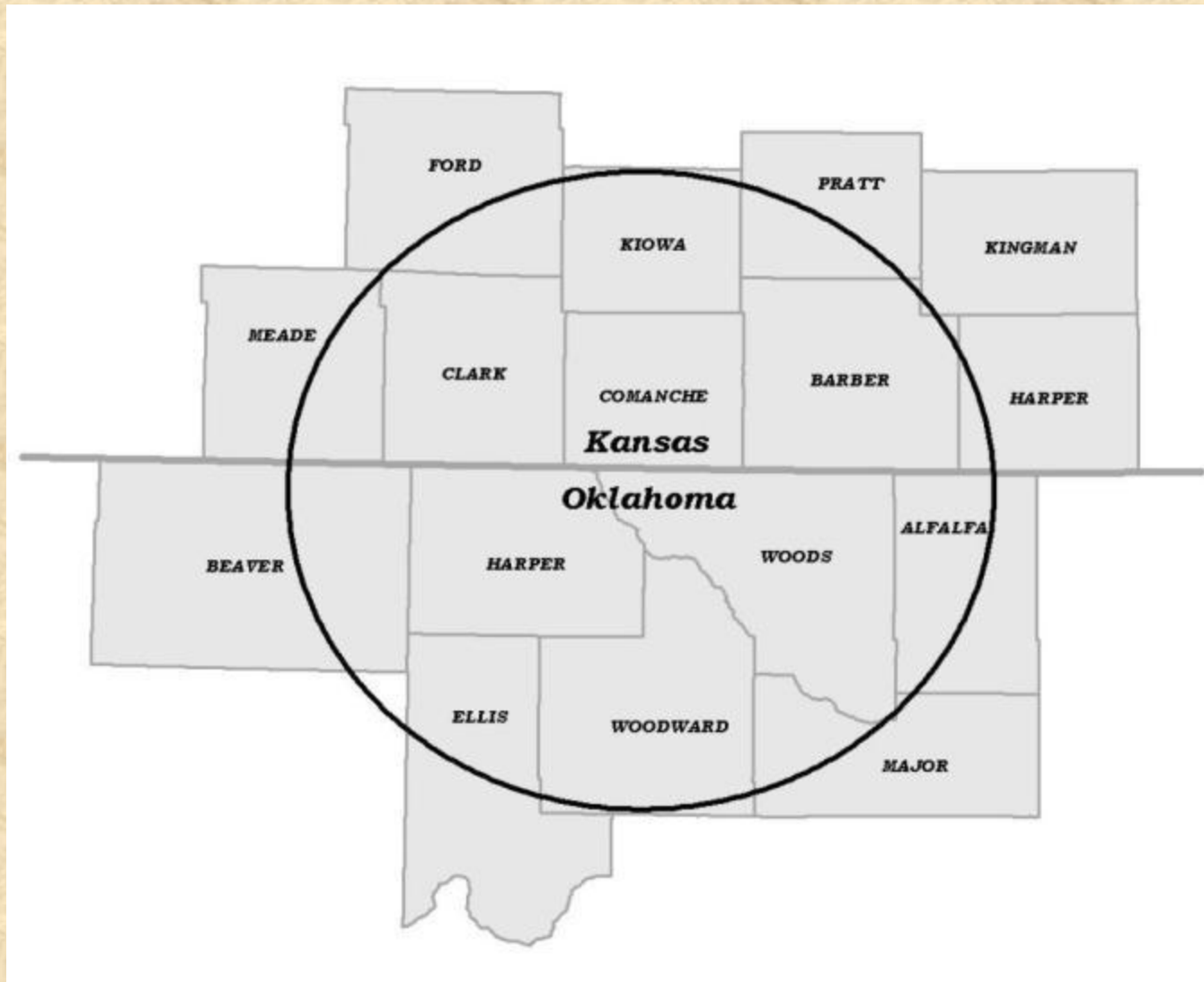
(quoted on his 84th birthday)

**When you have done all
that you can do**



Go on Vacation!

Comanche Pool Prairie Resource Foundation



Alexander Ranch

The Foundation's mission is to:

Provide demonstrations, education and consultation to regenerate the natural resources and to promote the economic growth of the rural community.

The Foundation's initiatives are:

- 1) Regenerate and protect our natural resource ecology.
- 2) Educate ranchers, citizens and youth about proper management of the rangeland ecosystem.
- 3) Enhance the socio-economic well-being of the rural community.

**The value of growing one
more ounce of grass per
square yard!**

**Approximately
\$3.50 per acre**

This equates to an annual economic
impact of \$3.5 Million for the
Comanche Pool area..

\$24,500 on the Alexander Ranch!

Alexander Ranch

Accomplishments

- Scholarships & Research Projects
- Annual Coffee Shop Meetings
- Peer Mentoring
- NRCS Range Specialist Position
- On-The-Ground Projects (Kansas & Oklahoma)
 - Awarded \$870,000 in grants
 - 38 Rangeland Improvement Projects
 - Effecting over 120,000 acres of rangeland.

From One Generation To Another!



Alexander Ranch

Challenges







Before



After



Before



After

A man wearing a dark, worn cowboy hat with a braided band, a white long-sleeved shirt, and a blue bandana covering his lower face. He is giving a thumbs-up gesture with his right hand, which has a ring on the ring finger. The background is a clear blue sky.

A Good Day!

Alexander Ranch

Special thanks for assistance with presentation:

Loren Graff – District Conservationist, NRCS; KS

Dwayne Rice – Rangeland Mgt. Specialist, NRCS; KS

Greg Kramos – Biologist, USFWS; KS

Eric Rundquist – Herpetologist, KS Univ.

Hillary Loring – Research Tech., KS Biological Survey

Comanche Pool Prairie Resource Foundation

Bo Rader – Wichita Eagle

Any Questions?



“Yes ... I believe there’s a question there in the back.”