





**Cookbook?**









• Too Wet ----- Too Dry

• Too Cheap ----- Too High

• And Other Excuses



# Residual



















# “Bob’s”

## Soil Test Results

(200 acre west unit)

- pH 6.1
- Organic Matter 2.2
- Phos. Lbs / acre 3
- Potassium lbs / acre 91

# Soil Amendments

West unit

- June 2003            1000 lb litter / acre
- July 2003            1.5 ton lime / acre
- Aug. 2004            800 lb litter /acre
- Sept. 2005            50 lb Nitrogen on 60 acres
- Oct. 2007            1000 lb litter / acre

# Eight year composite data - 21

## pastures (west unit)

- Forage height (in) 7.7 inches
- Forage height (out) 4.0 inches
  
- Ave. days each grazing 3.3 Growing + dormant
- Ave. days each grazing 1.5 Growing season
- Cow days per acre 199
  
-

# Bob's Rainfall records

- 2004 48 inches
- 2005 34 inches
- 2006 30 inches
- 2007 38 inches
- 2008 53 inches
- 2009 46 inches
- 2010 44 inches
- 2011 24 inches ??
- *30 year average* 42 inches (county)

# Bob's Rainfall records

• 2004	48 inches	215 CD/A
• 2005	34 inches	146 CD/A
• 2006	30 inches	114 CD/A
• 2007	38 inches	227 CD/A
• 2008	53 inches	247 CD /A
• 2009	46 inches	216 CD/A
• 2010	44 inches	234 CD/A
• 2011	24 ? inches	197 CD/A
• <i>8 year average</i>	<i>39.6</i>	<i>199.5 ave</i>

# Bob's Rainfall & Carrying Capacity

- 2004 1.7 A / cow unit
- 2005 2.5 A / cow unit
- 2006 3.2 A / cow unit
- 2007 1.6 A / cow unit
- 2008 1.5 A / cow unit
- 2009 1.7 A / cow unit
- 2010 1.6 A / cow unit
- 2011 1.9 A / cow unit
- *8 yr average* **1.96 A / cow unit**

# Forage Quality 2010

Date	Protein	TDN	IVD-% (48hr)
4-22-10	19.9	65	95
5-18-10	23.4	59	85
6-22-10	17.5	54	79
7-24-10	21.1	58	86
8-24-10	21.6	59	87
9-20-10	23.1	56	84



# Harvest Efficiency

- |       | Lbs. produced<br>(Per acre) | Lbs Harvested<br>(Per acre) | Efficiency<br>(seasonal) |
|-------|-----------------------------|-----------------------------|--------------------------|
| 2010- | 7995                        | 6440                        | 81%                      |
| 2011- | 8048                        | 6330                        | 79%                      |

Turn in ht. 7-8 residual ht. 3.5-4 inches???

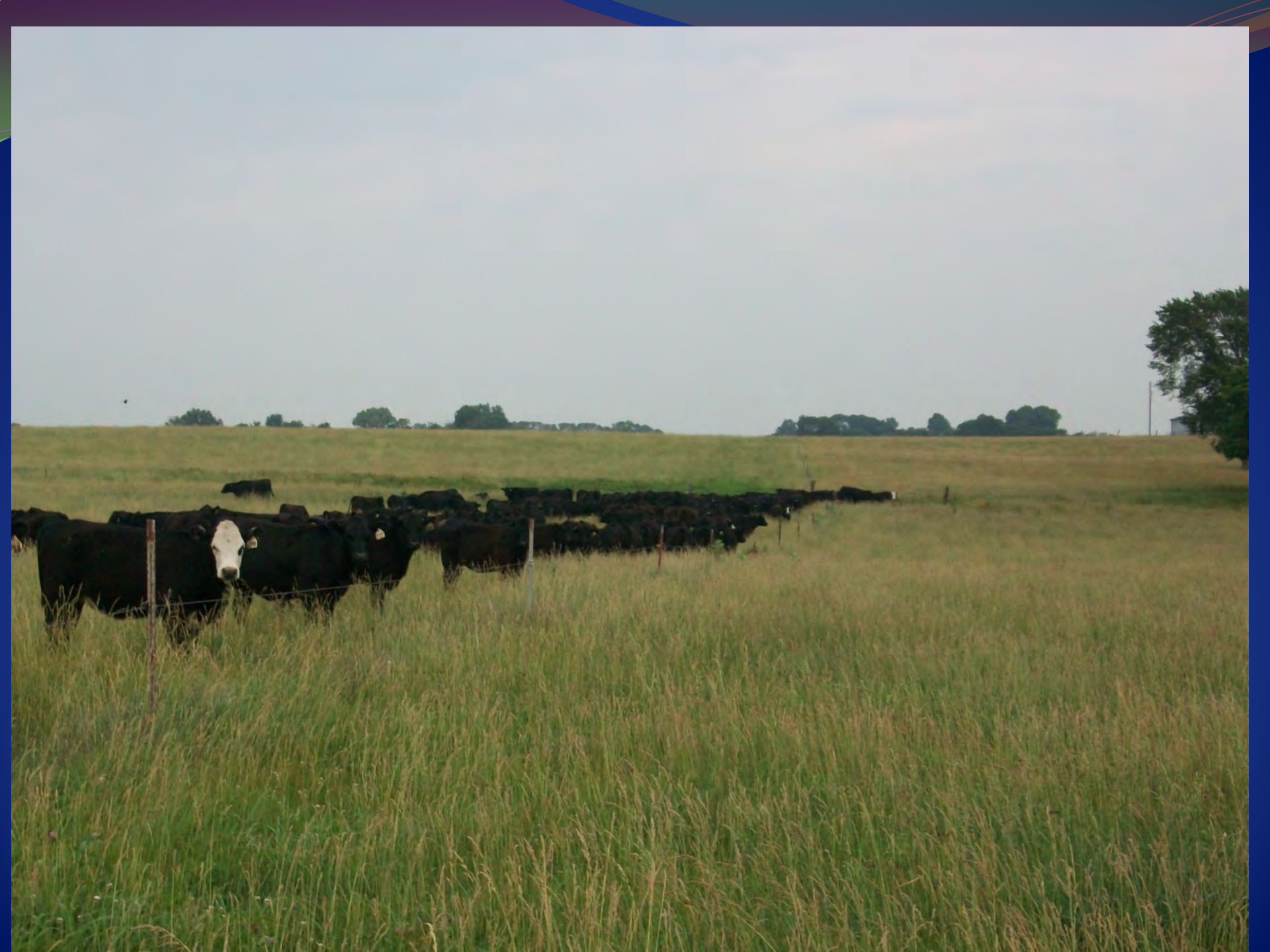
How can you harvest 80% by taking half & leaving half?

# Main Course or Dessert?



# 246 Heifers

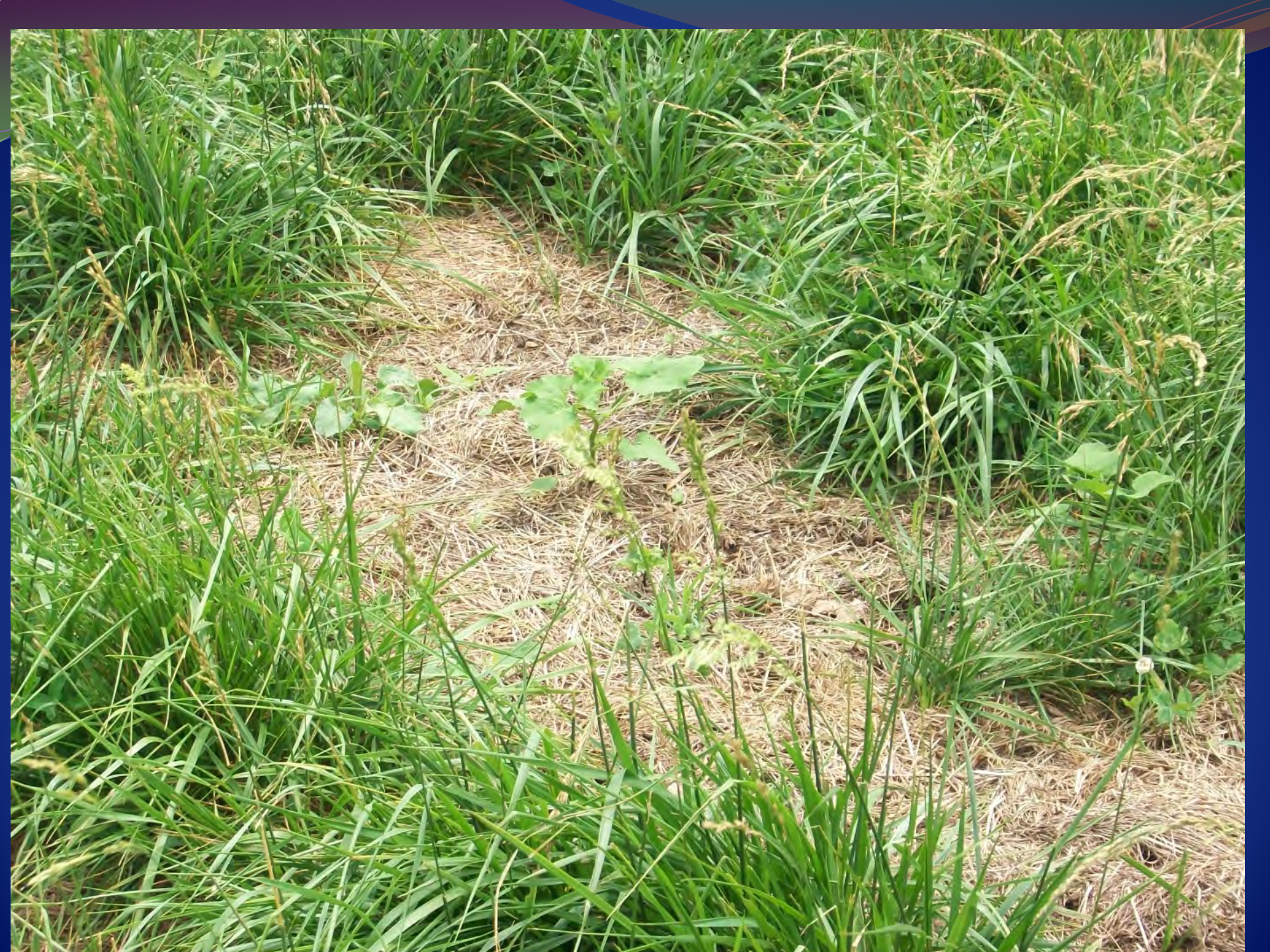


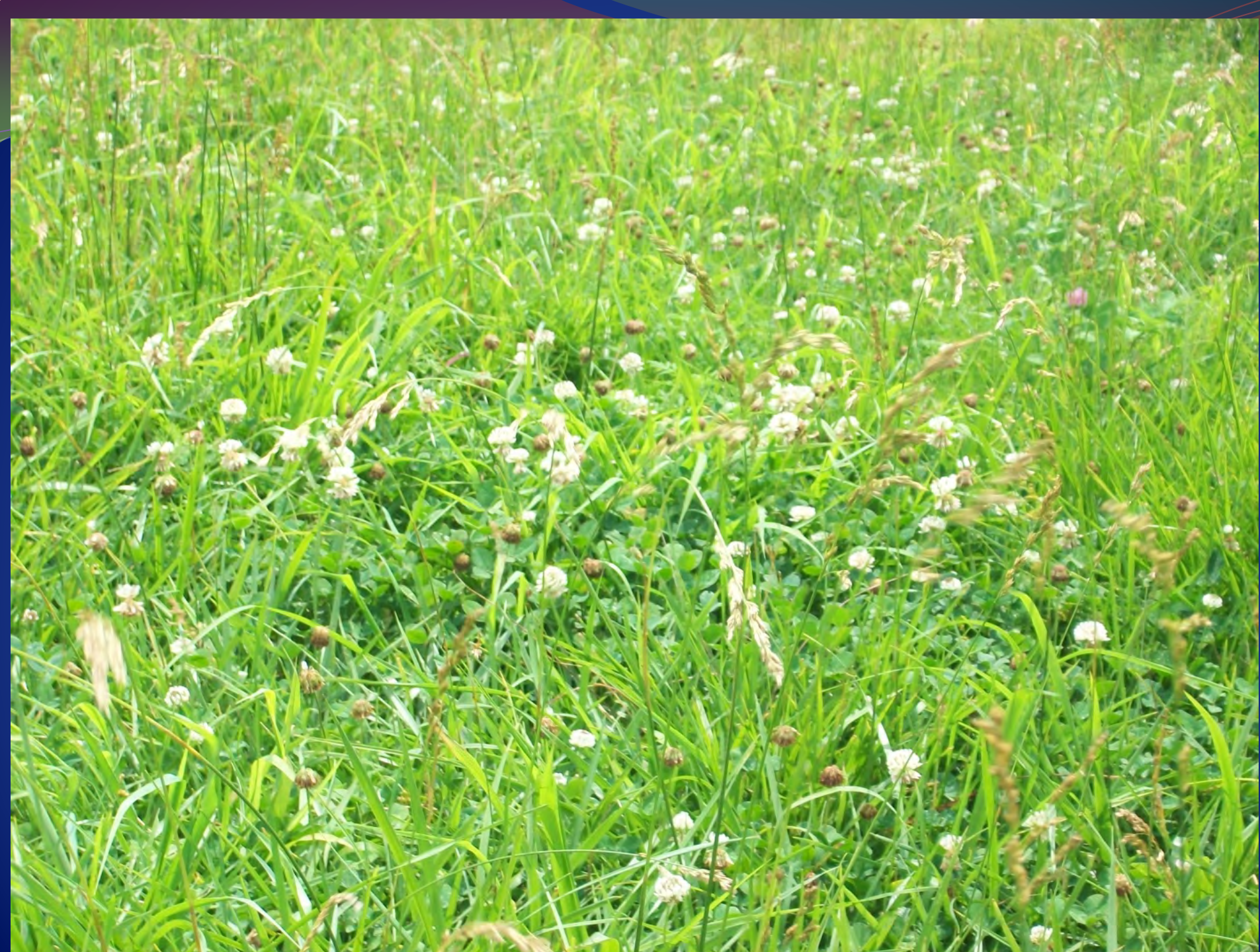


# Comments?























# Bob's management summary

- Is more traditional MIG
- Moves are typically 1X / day
- Stock Density varies by class of cattle
  - Cow / calf                      12,900 lb / acre                      (typical)
  - Replacement hfrs              19,750 lb / acre                      (typical)
  - Stocker steers                    23,000 lb / acre                      (typical)
- Cattle numbers vary by forage availability
- Machinery minimalist by nature
- *“Remain flexible at all times”*

# Bob's priorities

- “Grass grows grass”
- Manage residual height
- (residual must match goals)
- Manage quality to ensure performance
- Utilization rate is critical
- Flexibility is crucial
- Know your overall goals



**It's the right thing  
to do!**