

HUNT HILL CATTLE COMPANY

Woodville, Mississippi

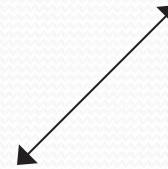




HUNT HILL CATTLE COMPANY

- Organized in 1995
- Commercial cow/calf in MS & LA
- Background calves in Texas
- Develop replacement heifers
- Retain ownership of calves and sell on a value-based grid in Kansas

“CONCEPTION to CONSUMPTION”

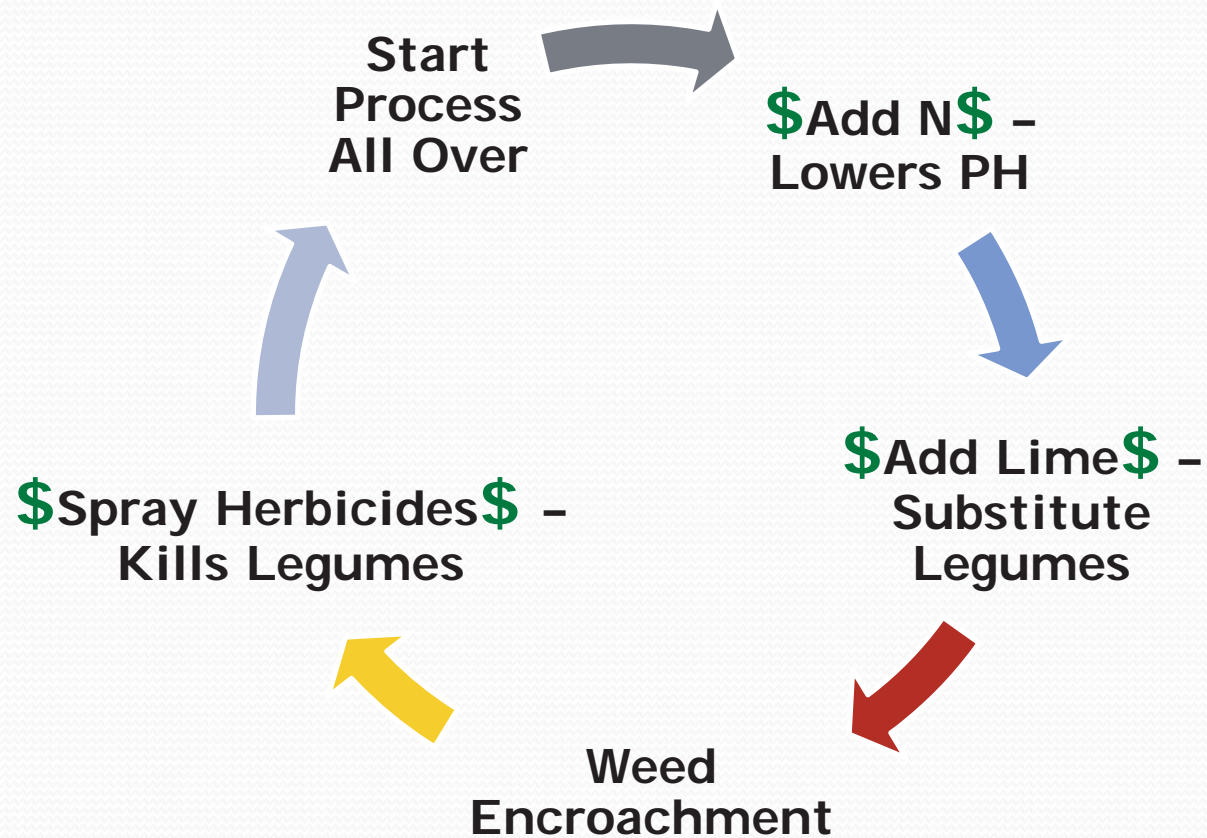




MISSION STATEMENT

- **Healthy Soil**
- **Nutritious Forage**
- **Healthy Cattle**
- **Nutritious Beef**
- **Healthy People**

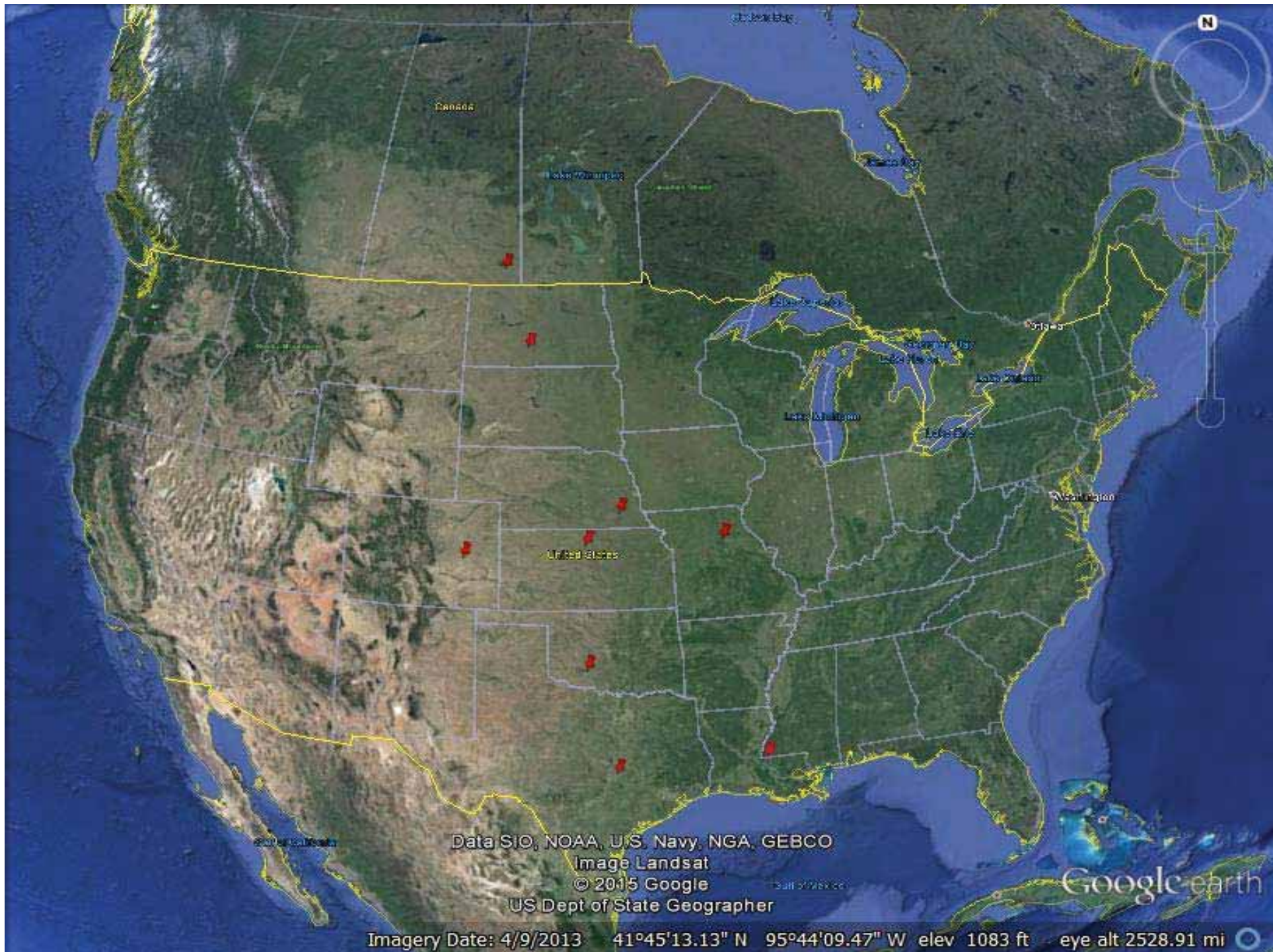
WHY CHANGE WAS NECESSARY





HOW TO CHANGE - MOB GRAZING AND SOIL HEALTH

- Canada
- North Dakota
- Nebraska
- Colorado
- Kansas
- Missouri
- Oklahoma
- Texas
- Mississippi



Data SIO, NOAA, U.S. Navy, NGA, GEBCO
Image Landsat
© 2015 Google
US Dept of State Geographer

Imagery Date: 4/9/2013 41°45'13.13" N 95°44'09.47" W elev 1083 ft eye alt 2528.91 mi



IMPROVING SOIL HEALTH

1. Minimize Soil Disturbance

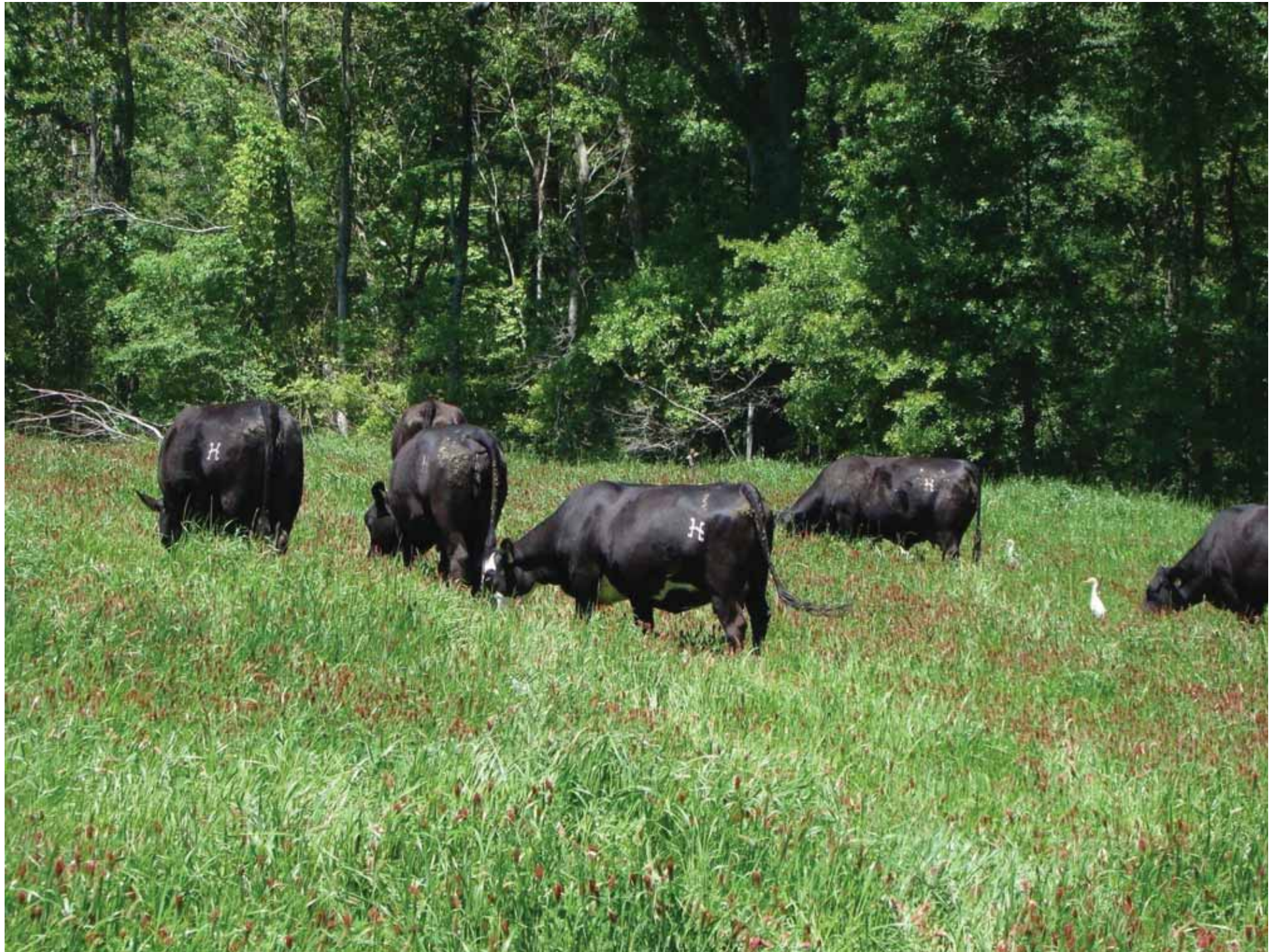
- **Eliminate All Disking**
 - ❖ Reduces decomposition of organic matter
 - ❖ Soil aggregates will not be destroyed, thus leaving a home for soil biology while reducing erosion
- **Over Seed Winter Annuals Using Cows to Trample in Seed**



IMPROVING SOIL HEALTH

2. Living Roots Year-Round

- Winter Annuals Planted into Warm-Season Perennial Pastures







IMPROVING SOIL HEALTH

3. Continual Soil Cover (Armor)

- Eliminate Disking
- Extensive Use of Stockpile









IMPROVING SOIL HEALTH

4. Plant Diversity

- Transition from Over Seeding Ryegrass to No-Till, Multi-Species Cover Crop
- Benefits
 - ❖ Increased diversity above ground allows for a more diverse underground community
 - ❖ Different root structures scavenge water and nutrients from different levels in the soil
 - ❖ Plants interact and compliment each other – deep-rooted plants help provide nutrients to shallow-rooted plants and vice versa
 - ❖ Increased production over monoculture













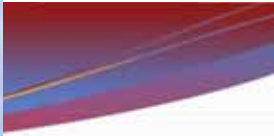




IMPROVING SOIL HEALTH

5. Integrate with Grazing Livestock

- Increased number of paddocks
- Instituted higher-density grazing
- Allowed pastures longer rest and recovery
 - ❖ Deeper rooted, more drought-tolerant plants
 - ❖ Moderate soil temperatures
 - ❖ Trampling feeds bugs



- **Multi-Species
Grazing**













RESULTS

- **Eliminated/Drastically Reduced Purchase of Synthetic Fertilizers**
- **Reduced Hay**
- **Increased Organic Matter**
 - **Each 1% increase of OM in top 6" of soil can hold 25,000 gallons of water/acre**
 - **Each 1% increase of OM contains \$700/acre of N, P, K and sulfur (nutrients)**



RESULTS

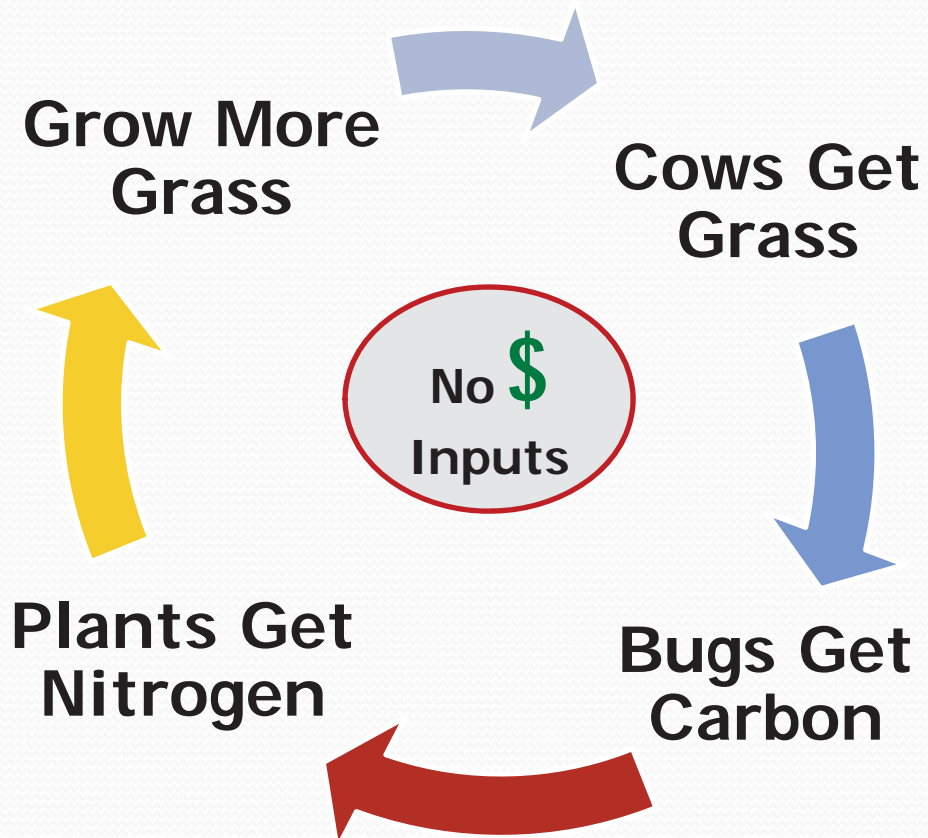
- **Grow More Grass and More Roots**
- **Reduced Water Runoff, Increased Water Retention and Holding Capacity**
 - NRCS Rainfall Simulation
- **Better Manure and Urine Distribution**

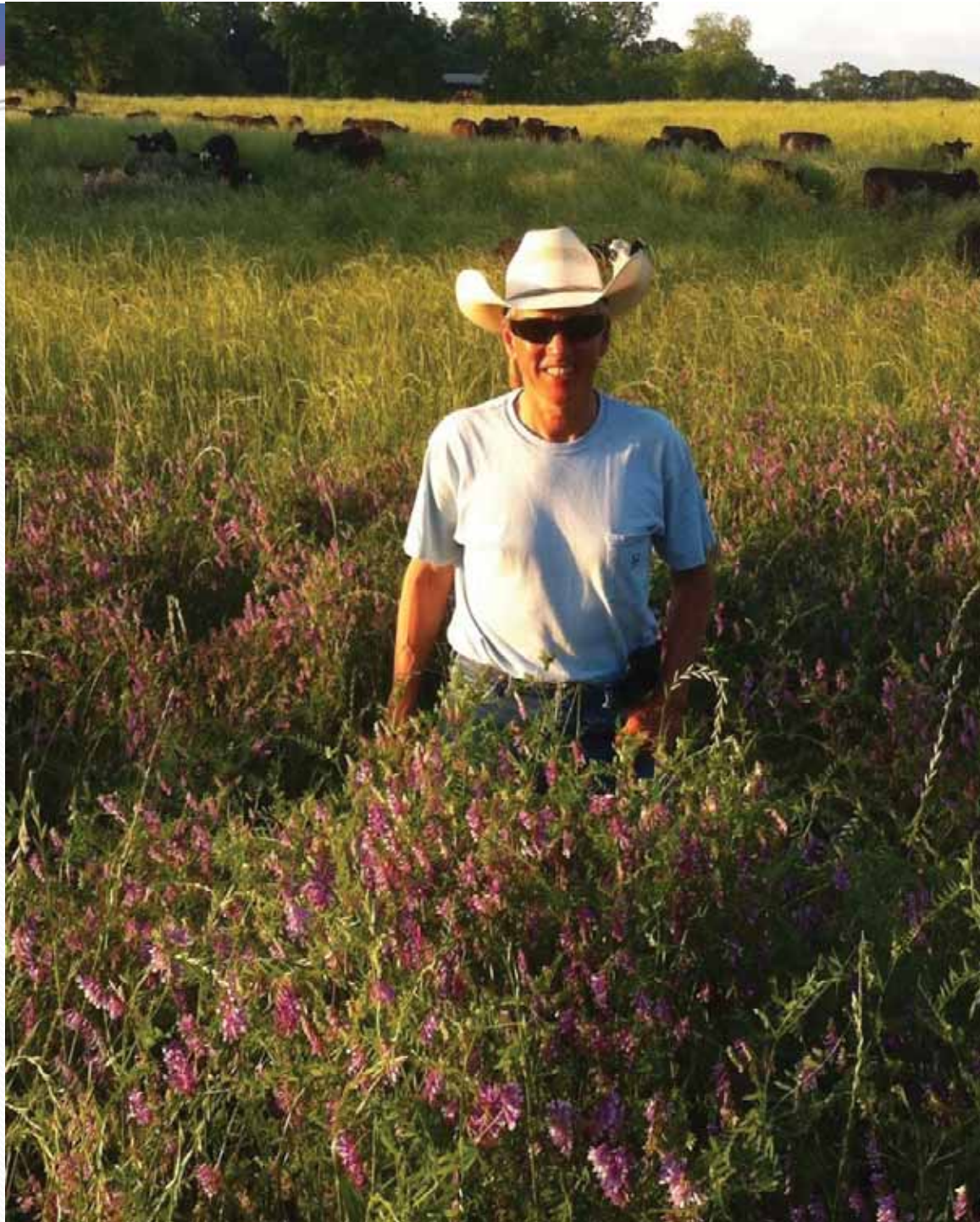


RESULTS

- Cows Less Selective in Grazing (Forbs)
- Cattle Become More Gentle and Allows for Easy Checking
- Healthier Cattle?
- More Plant Diversity
- Increased Soil Life (Dung Beetles, Earthworms, Spiders, etc.)
- Reduced Stress!

NEW CYCLE











SHORT-TERM GOALS

- **Optimize Cow Stocking Rate**
- **Learn the Art of No-Till Farming**
- **Elimination of Synthetic Fertilizer and Hay**
- **Improve Quality of Fall Stockpile**
- **Reduce Cow Supplementation**




CONCLUSION


- **Long-Term Goal: A Sustainable System That Provides Year-Round Grazing While Providing Proper Nutrition for all Livestock at the Lowest Possible Cost**
- **Soil Health is the Foundation of Our Mission Statement**

“Too many *managed* pastures suffer from uneven manure distribution, lack of legumes, short-rooted grasses and poor overall fertility.”



A photograph of a black cow in a field of tall grass, with other cows and a pond in the background. The cow in the foreground is looking towards the camera. The background features a pond, trees, and a forested hillside.

**“People don’t buy
what you do, but
why you do it.”**

A photograph of a sunset or sunrise over a field. The sky is filled with vibrant colors, transitioning from deep blue at the top to bright orange and yellow near the horizon. The sun is partially obscured by clouds, creating a dramatic glow. In the foreground, the silhouettes of trees and a light pole are visible against the bright sky. The overall mood is serene and contemplative.

**“What You Do Proves
What You Believe”**

“What Was Your Best Failure?”



“The future belongs to those who grow and feed the greatest amount of their energy without spending too much money doing so.”

